

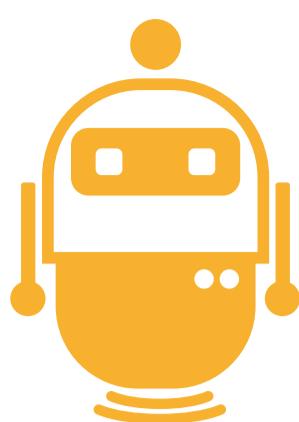
CONNECT



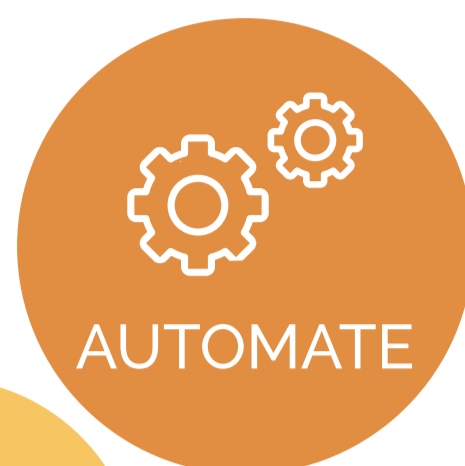
PLAY



LEARN



# Pixie PRO



AUTOMATE



TEACH



MAKE



DISCOVER

Forget about hats, shields and dongles.

With its world-mode 3G broadband + high-speed WiFi and Bluetooth, PixiePro is the embodiment of IoT.

Best in class multimedia.

Access the web, stream and play HD content, run rich multimedia applications and games.

Hand sized computing powerhouse.

With Freescale's i.MX6 Quad Processor and its high performance peripherals, the PixiePro is in a class of its own.

## Community Software

With Arch Linux® and Ubuntu® support, PixiePro is part of the Linux community and is ready to run your apps, hardware accelerated.



[www.treats4geeks.org](http://www.treats4geeks.org)



[www.treats4geeks.com](http://www.treats4geeks.com)

## Specs

CPU	i.MX6Q Quad ARM® Cortex™-Ag @ 1GHz
RAM	2 GB 64-bit DDR3
USB	2 Type-A Host USB 2.0 , 1 microUSB OTG
WiFi	802.11 a/b/g/n/ac @ 2.4GHz, 5GHz, 2x2 MIMO
Bluetooth®	4.2 (w/BLE), 2.1 + EDR
NFC	ISO 14443A/B, 18092, 15693, NFCIP-1, NFC Forum
Mobile Broadband	UMTS/HSPA+ 3G module
Location	GPS/GLONASS
Display	micro HDMI up to 1080p @ 60Hz HDTV
Storage	2 UHS-I SD Card Ports with transfer rates up to 104 MB/s
Audio	mini TOSLINK® optical port / 3.5mm line out
Sensors	9-axis IMU (accelerometer, gyro and magnetometer)
Expansion Port	Gigabit Ethernet, PCIe x1, SDIO, 2 MIPI, SATA-II, RGB666, USB 2.0 HS, CAN, SPI, 2 UART, 2 I2C, GPIOs
Multimedia	2D/3D GPUs & h.264 video encode/decode @1080p30
Power Input	5V DC Input
Dimensions	52 mm x 91 mm

